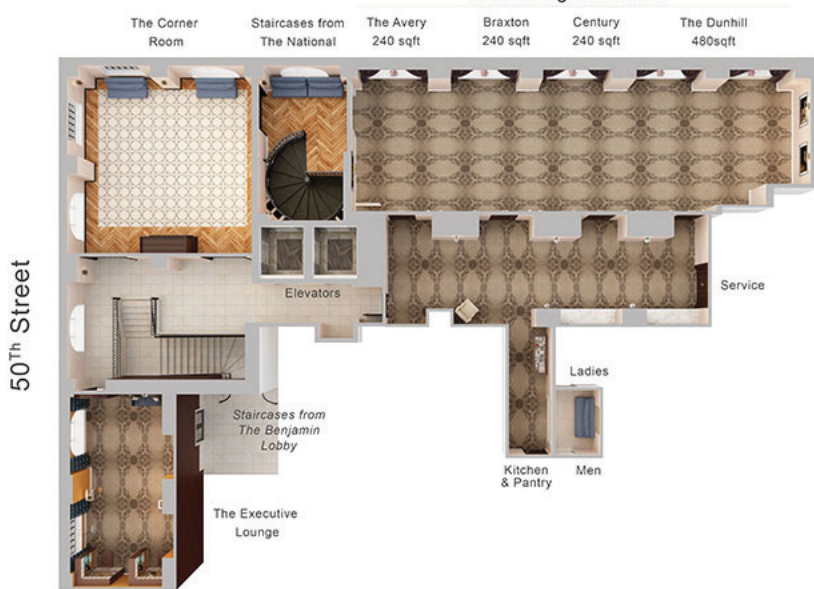




**PREMIER
MEETING
VENUES**

Lexington Avenue

The Lexington Rooms



THE BENJAMIN

Sophisticated. Customizable. Savory.

A dignified, visually stunning NYC landmark hotel established in 1927, The Benjamin’s legacy is one of prestige. Personalized corporate and social events large and small are executed in multiple event spaces, each featuring up-to-the-minute style and décor.

Both dining and catering menus are curated by Food Network’s Chef and Restaurateur Geoffrey Zakarian.

2,200 sq. ft. of modular space; accommodates up to 150 guests • Preferred room rates for groups • Personal event managers • Soundproof windows with city views • Continually upgraded, advanced flat-screen Monitors, Wi-Fi, and video conferencing capabilities • Private breakout rooms • Chef Geoffrey Zakarian available for special appearances—please inquire for availability and fees

ROOM CAPACITY	SQ. FEET	CEILING HEIGHT	THEATER	CLASSROOM	RECEPTION	BANQUET ROUNDS	CONFERENCE	U-SHAPE CAPACITY	HOLLOW SQUARE	CRESCENT ROUNDS
The Lexington Room	1200	9'	100	50	150	90	50	50	54	54
The Dunhill	480	9'	40	24	40	30	18	20	22	18
The Century	240	9'	16	12	20	12	12	—	—	—
The Braxton	240	9'	16	12	20	12	12	—	—	—
The Avery	240	9'	16	12	20	12	12	—	—	—
The Corner	576	9'	50	24	50	48	26	18	16	18
Executive Lounge	380	9'	—	20	20	16	—	—	—	—
Benjamin Suite	1600	9'	—	30	24	12	—	—	—	—
The National	2000	9'	—	—	200	150	—	—	—	—